

Migration Services

Migration of PPM data is a critical step for an organization in the evolution of their Microsoft PPM system (Project Server or Project Online). A successful migration to a newer version of Microsoft PPM increases the success of Project Portfolio Management in the organization. A migration of Project Server or Project Online is a complex process that requires expertise in migration strategy, technical approach and validation to ensure complete data integrity.

FluentPro offers organizations a managed migration as a service that provides all of the migration work including consulting and implementation.

With over 300 successfully completed migrations and the only software product in the market available for migration, FluentPro is the most qualified partner available to deliver your Project Server or Project Online migration.



FROM	TO	Project Server 2010	Project Server 2013	Project Server 2016	Project Online
Project Server 2010		YES	YES	YES	YES
Project Server 2013			YES	YES	YES
Project Server 2016				YES	YES
Project Online			YES	YES	YES
Project Server 2007			YES*	YES*	YES*
External PPM		YES	YES	YES	YES

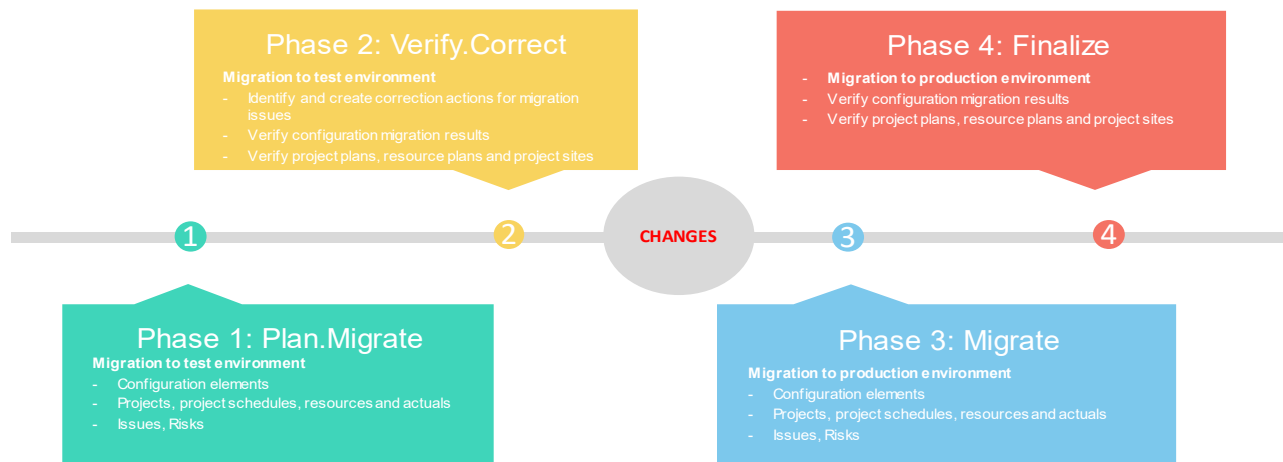
* Via upgrade to Project Server 2010

The breadth and depth of FluentBooks capabilities allow for migration scenario from Project Server 2007 or higher to Project Online. Migration from Project Server 2007 or higher to another Project Server version is also supported. Even Project Online to Project Online tenant migration is supported.

In addition, migration scenarios are not limited to Project Server but are also supported from other external PPM platforms such as Daptiv, Clarity, Primavera or EclipsePPM into Project Server or Project Online.

FluentBooks is the only software product for configuration management and migration on Microsoft Project Server / Microsoft Project Online platforms.

Migration Flow



Migration Strategy

- It is important to verify and identify the approach and scope of a migration
- What will the migration include? (Projects, Project Workspaces and Content, Timesheets)
- What are the essential Projects, Projects Sites and Timesheets?
- What PPM data can be archived?
- What elements in your source system will not be supported?
- What are the post-migration activities to manage content?

Configuration	Projects
Resources	Project Schedules
Resource Plans	Project Sites
Workflows	Timesheets

— What's Next

fluentBooks

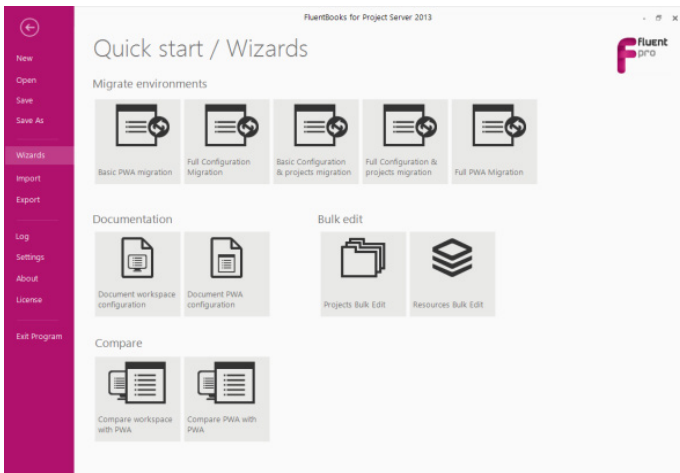
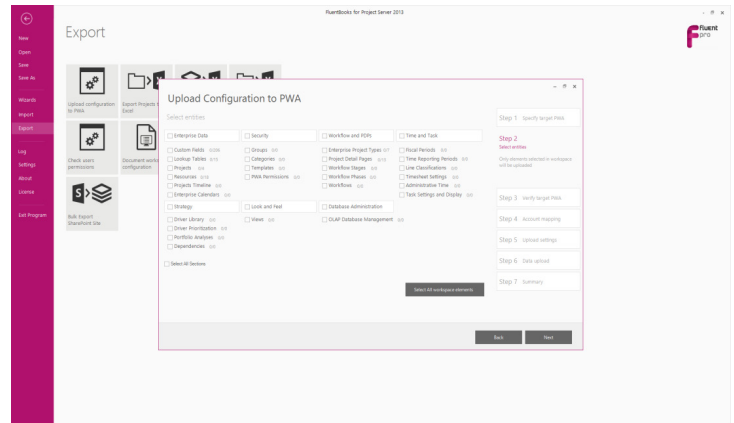
FluentBooks for Migration and Administration

FluentBooks is used for a migration and then becomes the primary administration solution for Project Online or Project Server.

- Bulk edit of projects, resources, rates, lookup tables, fields
- Permissions check, delegates editing
- Compare functionality for PWAs, documenting
- SharePoint site migration / Site bulk update / Site compare
- Provision and maintain Dev / Test / Training PWA sites

Customers can benefit from using FluentBooks for Project Online / Project Server Administration. We have documented savings of up to 70% of administration / maintenance time vs manual work.

[You can learn more on FluentBooks here](#)



The Value of FluentPro Migration-As-A-Service

Technology

- FluentBooks is the only product used for migrations and continued

PWA administration

- Advanced migration verification reports that validate migration data integrity

Experience

- FluentPro has completed hundreds of Project Server and Project Online migrations with data sets of up to thousands of projects.
- Migrations to Project Online from other PPM systems such as Dap-tiv, CA Clarity, Primavera, and EclipsePPM is available.

Cost Effectiveness

- Right scoped and priced, Guaranteed Service based on data volume.

— Who We Are

FluentPro Software Corporation is a Microsoft Gold Partner in Project Portfolio Management (PPM). We are the leading partner with unique software products for governance and administration of the Microsoft PPM platform.

